

PRODUCT  
GUIDE 2012



**PROFILE  
DESIGN**

[www.profile-design.com](http://www.profile-design.com)

# Athlete Tested. World Champion Approved.

We introduced ourselves in 1988 with our first AeroBar. Today, athletes around the world clutch our bars, wear our brand and depend on our components to do more with a slice of time than they ever imagined possible.

You'll find our products at every level of competition. From our legendary carbon fiber AeroBars used by world champions, to high-end carbon fiber and aluminum road components, triathlon specific wetsuits and our new category of wheels for triathlon and road cycling – we keep pushing technical advantages and product innovation. With components, wetsuits and wheels, Profile Design has what you need to slice through water and fly down the road.

Experience, passion and a commitment to our athletes set us apart and keep them winning.



# Sponsored Athletes

Profile Design proudly sponsors athletes and teams from around the globe. All with one thing in common. Passion for performance.

## Athletes:

Chris "Macca" McCormack	Josiah Middaugh
Mirinda Carfrae	Justin Drew
Frederick Van Lierde	Kate Major
Belinda Granger	Maik Twelsiek
Brian Fleischmann	Mathias Hecht
Bryan Rhodes	Matthew Reed
Charisa Wernick	Melanie McQuaid
Chris Foster	Nina Kraft
Chris Legh	Oscar Galindez
Conrad Stoltz	Pip Taylor
Christian Brader	Samantha Mcglone
Dean Hewson	Terenzo Bozzone
Felipe Bastos	Timothy O'Donnell
Jo Lawn	William Floyd

## Teams:

Team Jamis/Sutter Home Men's Cycling Team Presented By Colavita  
Colavita/Baci Women's Cycling Team Presented By Cooking Light  
U.S. Pro Tri Team  
Team Melrad  
Team Sirius  
Commerzbank Triathlon Team  
Mark Allen Online Training



Athlete: Jo Lawn

**T3+ CARBON**

- > Carbon fiber extensions
- > 6061-T6 aluminium forged brackets
- > F-22 adjustable anatomic armrests
- > J3 brackets for an adjustable extension and armrest position

Clamp: Fits 26.0mm & 31.8mm bars  
Weight: 540 grams

**T2+ COBRA**

- > Carbon fiber extensions
- > 6061-T6 aluminium forged brackets
- > F-22 adjustable anatomic armrests
- > Highly adjustable J2 Brackets for a lower armrest position

Clamp: Fits 26.0mm & 31.8mm bars  
Weight: 495 grams

**T1+VIPER**

- > Official aerobar of Ironman
- > Carbon fiber extensions
- > 6061-T6 aluminum forged brackets
- > F-22 adjustable anatomic armrests

Clamp: Fits 26.0mm & 31.8mm bars  
Weight: 536 grams



Official Product of the Ironman Triathlon

**CARBON STRYKE**

- > F-19 adjustable anatomic armrests
- > ZB arm bracket system
- > Compatible with flip-up ZB

Clamp: Fits 26.0mm & 31.8mm bars  
Weight: 496 grams

**VOLNA**

- > Aerodynamic carbon fiber wing with ergonomic brake grip areas
- > Ergonomic ski bend extensions with internal cable routing
- > F25c adjustable anatomic carbon armrests

Clamp: 31.8mm  
Width: 42 cm center-to-center  
Weight: Carbon - 670g, White - 680g

**CX3**

- > Carbon fiber wing, extensions and armrests.
- > Internal shift cable routing
- > F22c adjustable anatomic carbon armrests

Clamp: 31.8mm  
Width: 42 cm center-to-center  
Weight: Carbon - 653g, White - 660g



**TMAG**

- > Low mounting forged 6061-T6 AL top bracket
- > Adjustable AZ-80 magnesium bottom bracket
- > S-bend AZ-80 magnesium extensions
- > One of the lightest adjustable clip-on systems on the market
- > Two bolts are used to secure the aerobar and the extensions
- > F-25 injected armrests

Color: Gloss black  
Weight: 382 grams



**T3+**

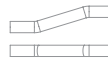
- > 6061-T6 aluminum forged brackets
- > Injection molded F-19 adjustable armrest
- > "J2" Brackets™ for an adjustable arm position

Clamp: Fits 26.0mm & 31.8mm bars  
Weight: 500 grams



**ZBS**

- > Forged 6061-T6 aluminum brackets and extensions
- > F-19 adjustable anatomic armrests
- > ZBS brackets for a lower arm position
- Color: Gloss Black
- Clamp: Fits 26.0mm & 31.8mm bars



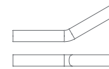
**ZBS S-BEND**

- > Available in 225, 245, 265mm lengths
- >Weight: 426g (245mm)



**ZBS TT**

- > Available 270 mm length
- >Weight: 435g



**ZBS SKI-BEND**

- > Available in 225, 245, 265mm lengths
- >Weight: 432g (245mm)



**ZBS DL**

- > Length: 215mm
- >Aerobridge width: 100 mm
- >Weight: 470 ( w/bridge)



**T1+**

- > 6061-T6 aluminum extensions and forged brackets
- > F-19 adjustable anatomic armrests
- > "J2" Brackets™ for an adjustable arm position

Clamp: Fits 26.0mm & 31.8mm bars  
Weight: 545 grams



**T2+**

- > 6061-T6 aluminum forged brackets
- > Injection molded F-19 adjustable armrest
- > "J2" Brackets™ for an adjustable arm position

Clamp: Fits 26.0mm & 31.8mm bars  
Weight: 500 grams



**T2+DL**

- > ITU draft legal with proper installation
- > 6061-T6 aluminum extensions and forged brackets
- > F-19 adjustable anatomic armrests

Clamp: Fits 26.0mm & 31.8mm bars  
Weight: 444 grams



**LEGACY**

- > Split extension with low armrest bridges and mount positions

Clamp: Fits 26.0mm & 31.8mm bars  
Weight: 475 grams



**CENTURY**

- > Low armrest bridges and three mount positions

Clamp: Fits 26.0mm & 31.8mm bars  
Weight: 572 grams



**JAMMER GT**

- > 6061-T6 aluminum extensions and forged brackets
- Length, width, and rotational extension adjustment
- > Equipped with our new J Brackets™ for a lower arm position
- > F-19 adjustable anatomic armrests

Clamp: MULTI-FIT System™ fits 26.0mm & 31.8mm bars  
Weight: 512g



**AIRSTRYKE**

- > Includes our patented flip-up arm rests

Clamp: Fits 26.0mm & 31.8mm bars  
Weight: 528 grams



**AIRSTRYKE S**

- > Forged 6061-T6 Aluminum clip-on extension with flip-up arm rests
- > F-19 adjustable anatomic armrests
- > One piece 6061-T6 aluminum extension and forged brackets
- > Compatible with non-flip ZB arm brackets & our Swiftshift

Clamp: Fits 26.0mm & 31.8mm bars  
Weight: 542g



**SVET ZERO**

- > Multi-direction, multi-layer carbon fiber
- > 3:1 Wing Section with zero drop Ergonomic straight brake extensions Pre-slotted internal cable routing (Di2 Compatible)

Clamp: 31.8mm  
 Width: 40, 42, 44 cm wide (center to center)  
 Drop: 0mm  
 Color: Gloss carbon  
 Weight: 200-210grams



**SVET**

- > Multi-direction, multi-layer carbon fiber
- > 3:1 Wing Section
- > Ergonomic straight brake extensions
- > Pre-slotted internal cable routing (Di2 Compatible)

Clamp: 31.8mm  
 Width: 40, 42, 44 cm wide (center to center)  
 Color: Gloss carbon  
 Weight: 190-210 grams



**Prosvet**

- > Multi-direction, multi-layer carbon fiber
- > Deep aero wing section (exceeds 3:1)
- > Ergonomic multi hand position brake extensions
- > Pre-slotted internal cable routing (Di 2 compatible)

Clamp: 31.8mm  
 Width: 40, 42, 44 cm wide (center to center)  
 Color: Gloss carbon  
 Weight: 200-220 grams



**Ozero**

- > 120mm center clamp section optimised for Profile Design clip-on aerobars
- > Advanced aerodynamic design using Hydroform technology

Clamp: 31.8mm  
 Width: 40, 42, 44 cm wide (center to center)  
 Color: Gloss black  
 Weight: 285 grams



**ABS Aerobrake System**

- > Full-carbon lever and mount
- > Ergonomic and articulated single finger design
- > Multi-directional, multi-layer carbon fiber
- > Carbon fiber lever paired with injected composite mount
- > Aerospace engineer designed
- > Compatible with all Profile Design bars

Weight: 78 grams per pair



**Semi Carbon**

- > Carbon fiber lever, composite mount

Weight: 85 grams per pair



**Aluminum**

- > 6061-T6 Aluminum & composite mount

Weight: 95 grams per pair



**T2 Wing**

- > UCI legal, aerodynamic design
- > Double-buttet 6061-T6 aluminum

Clamp: 31.8mm  
 Width: 40, 42, 44 cm wide (center to center)  
 Weight: 250-265 grams



**Airwing / Airwing OS**

- > Double-buttet 6061-T6 aluminum
- > Low drop allows for aggressive TT position

Clamp: 26.0 or 31.8mm  
 Width: 40, 42, 44 cm wide (center to center)  
 Weight: 230-250 grams



**Stoker 26**

- > Allows for the widest mount for a clip-on aerobar

Clamp: 26.0 mm  
 Width: 40, 42, 44, and 47cm wide (center to center)  
 Weight: 235-250 grams



PROFILE DESIGN

ALTAIR 80 CARBON

ALTAIR 80 CARBON

ALTAIR 80

ALTAIR 80

ALTAIR 80 CARBON

PROFILE DESIGN



# ALTAIR

Custom rim shape manufactured with high temperature resin for better performance. Using data of wind speeds from Ironman and Ironman 70.3 courses and typical age group performance. We used CFD (Computational Fluid Dynamics) software to optimize the rim shape using, for the type of real world conditions that most athletes will encounter.

## CARBON WHEELS

- > Proprietary precision machined alloy hubs with custom depth flanges for extra stiffness
- > Sapim CX Sprint spokes with hidden nipples for additional aerodynamics
- > Sealed cartridge bearings
- > Hand-built assembly

Size: 700c x 20H Front/24H Rear, Radial front, 2X rear

Color: UD carbon finish with colored decals, black hubs and black spokes



### ALTAIR 52 FULL CARBON TUBULAR

- > Proprietary carbon fiber 52mm section tubular rim
- > Includes brake pads, QR, valve extenders, spoke tool, spokes & nipples (2 front, 4 rear)

Weight: 1443 (w/o QR)



### ALTAIR 80 FULL CARBON TUBULAR

- > Proprietary carbon fiber 80.5mm section tubular rim
- > Includes brake pads, QR, valve extenders, spoke tool, extra spokes & nipples (2 front, 4 rear)

Weight: 1624g (w/o QR)



### ALTAIR 52 FULL CARBON CLINCHER

- > Proprietary carbon fiber 52mm section full carbon clincher rim
- > Includes brake pads, QR, valve extenders, spoke tool, extra spokes & nipples (2 front, 4 rear)

Weight: 1683g (w/o QR)



### ALTAIR 80 SEMI CARBON CLINCHER

- > Proprietary carbon fiber 80.5mm section carbon clincher rim with aluminum bead and braking surface
- > Includes QR, valve extenders, spoke tool, extra spokes & nipples (2 front, 4 rear)

Weight: 2088g (w/o QR)

### ALTAIR 80 FULL CARBON CLINCHER

- > Proprietary carbon fiber 80.5mm section full carbon clincher rim
- > Includes brake pads, QR, valve extenders, spoke tool, extra spokes & nipples (2 front, 4 rear)

Weight: 1906g (w/o QR)



### ALTAIR 52 SEMI CARBON CLINCHER

- > Proprietary carbon fiber 52mm section carbon clincher rim with aluminum bead and braking surface
- > Includes QR, valve extenders, spoke tool, extra spokes & nipples (2 front, 4 rear)

Weight: 1756g (w/o QR)



### ALTAIR DISC WHEEL

- > Rigid Nomex honeycomb core
- > Rear hub 130mm spacing with 2 in 1 System: Shimano/Sram flips over to Fixed Gear
- > Includes QR and brake pads Colour UD carbon finish with colored decals, black hubs
- > Weight 1325 grams

Not pictured: ALTAIR 52 TRACK TUBULAR, ALTAIR 80 TRACK TUBULAR



PROFILE DESIGNNA

PROFILE DESIGNNA

ARMADA 42 AL



# ARMADA

Proprietary precision alloy hubs using forged 6061-T6 AL hub shells with custom depth flanges for extra stiffness. Internal bearing and freehub surfaces are CNC machined to exacting specifications. Sealed cartridge bearings roll smooth and fast. All wheels are hand built which ensures tighter tolerances and creates a longer lasting and better quality build.

## ALUMINUM WHEELS

- > Proprietary precision machined alloy hubs with custom depth flanges for extra stiffness
- > Double butted spokes for added strength without weight penalty
- > Sealed cartridge bearings
- > Hand-built assembly
- > Includes QR, valve extenders, spoke tool, extra spokes & nipples (2 front, 4 rear)

Size: 700c x 20H Front/24H Rear, Radial front, 2X rear  
Color: Black gloss finish with colored decals, black hubs and black spokes



- ARMADA 24**
- > Extruded 6061-T6 Aluminum 24mm semi-aero section rim
  - > Proprietary precision machined alloy hubs with custom depth flanges for extra stiffness
  - > Double butted spokes for added strength without weight penalty
  - > Sealed cartridge bearings, Hand-built assembly
  - > Includes QR

Size: 700c x 20H Front/24H Rear, Radial front, 2X rear  
Color: Black gloss finish with colored decals, black hubs and black spokes  
Weight: 1678g (w/o QR)



- ARMADA 30**
- > Extruded 6061-T6 Aluminum 30mm semi-aero section rim
  - > Proprietary precision machined alloy hubs with custom depth flanges for extra stiffness
  - > Double butted spokes for added strength without weight penalty
  - > Sealed cartridge bearings, Hand-built assembly
  - > Includes QR

Size: 700c x 20H Front/24H Rear, Radial front, 2X rear  
Color: Black gloss finish with colored decals, black hubs and black spokes  
Weight: 1730 (w/o QR)



- ARMADA 38**
- > Extruded 6061-T6 Aluminum 38mm semi-aero section rim
  - > Proprietary precision machined alloy hubs with custom depth flanges for extra stiffness
  - > Double butted spokes for added strength without weight penalty
  - > Sealed cartridge bearings, Hand-built assembly
  - > Includes QR

Size: 700c x 20H Front/24H Rear, Radial front, 2X rear  
Color: Black gloss finish with colored decals, black hubs and black spokes  
Weight: 1870g (w/o QR)



- ARMADA 42**
- > Extruded 6061-T6 Aluminum 42mm semi-aero section rim
  - > Proprietary precision machined alloy hubs with custom depth flanges for extra stiffness
  - > Double butted spokes for added strength without weight penalty
  - > Sealed cartridge bearings, Hand-built assembly
  - > Includes QR

Size: 700c x 20H Front/24H Rear, Radial front, 2X rear  
Color: Black gloss finish with colored decals, black hubs and black spokes  
Weight: N/A

## WHEEL FEATURES



Proprietary carbon rim design



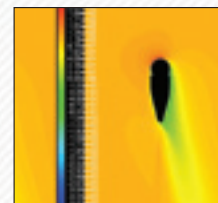
Proprietary precision machined alloy hubs with custom depth flanges for extra stiffness



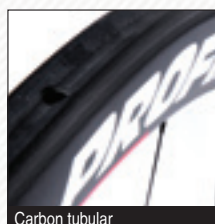
Sealed cartridge bearings



Sapim bladed spokes with hidden nipples for additional aerodynamics



Optimized rim shape developed with CFD (Computational Fluid Dynamics) software



Carbon tubular  
Three different carbon rim types



Full carbon clincher



Semi carbon

# SYNC 2 BOTTLE HYDRATION BELT SYSTEM

Simple, ergonomic, efficient and adjustable, the Sync hydration belt makes one-handed refueling a snap. A simple flip of the wrist and the bottle is free from the bracket. Snap it back with secure engagement and your hands are free. Easy to use and adjustable, the Sync Hydration Belt takes race-day and training refueling to the next level.



- > Single hand operation, secure engagement
- > Universal left/right bracket
- > Brackets are made of lightweight injected composite
- > "No leak" cap and tab bottles
- > 8 oz /235mL capacity
- > BPA free and food safe
- > Textured pads are injected EVA foam
- > Elastic belt closure for custom fit
- > Reflective piping and accents

Belt Colors: Black, Red, Blue or Pink with Black or White



Size chart: S - 31" (78cm) M - 34" (86cm)  
L - 37" (94) XL - 40" (101cm)

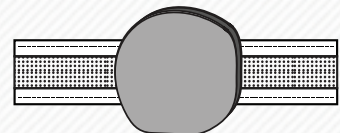
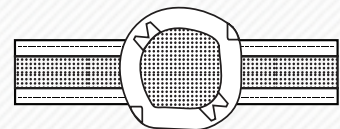
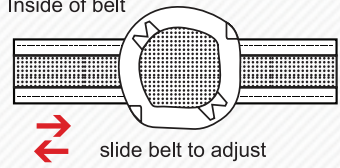


### Single hand operation



### Adjustment:

Inside of belt



## SYNC 2 BOTTLE/BRACKET KIT

Integrates with the Sync hydration belt system. Includes: Two Injection molded brackets, ergonomic 8 oz/235mL BPA-free food-safe bottles with “no leak” caps and textured EVA foam Velcro backed pads. Black, red, blue or pink.



## SYNC 2 BOTTLE KIT

Two ergonomic 8 oz/235mL BPA-free food-safe bottles with “no leak” caps Fits Sync brackets Clear with black, red, blue or pink caps.



## SYNC BELT NEOPRENE VELCRO POUCHES

Neoprene pouch designed to integrate with the Sync Hydration System. Includes reflective piping and Velcro closure for easy access, Black neoprene .

Small - 80mm x 80mm

Large - 110mm x 110mm





## SYNC BELT NYLON ZIPPERED POUCHES

Nylon pouch designed to integrate with the Sync Hydration System. Zippered outer closure for secure but easy access. Zippered inner compartment, Black nylon.

Small - 120mm x 70mm x 30mm

Large - 120mm x 90mm x 30mm



## TIMING CHIP BAND

Neoprene construction with Velcro loop closure, black neoprene.



## RACE NUMBER BELT

Adjustable elastic race number belt with minimal buckle, reflective tabs and easy to install locks black, white, red, blue or pink.



## GEL-READY RACE NUMBER BELT

Adjustable elastic race number belt with minimal buckle, reflective tabs and easy to install locks. Includes rooms for 6 gel packets per side black, white, red, blue or pink.





Frederick Van Liedre on his way to Ironman France victory

Photo: © JACVAN-TRIHEBDO





#### Canta SS Drop bar

- > Multi-direction, multi-layer carbon fiber road bar
- > Semi-anatomic drops with a short reach and shallow drop
- Clamp: 31.8mm
- Width: 40, 42, 44 cm wide (center to center)
- Drop/Reach: 125mm/70mm
- Color: Gloss carbon
- Weight: 204g (42cm)



#### Cobra Drop Bar / Cobra Drop Bar White

- > Aerodynamic multi-layer carbon fiber road bar
- > Internal cable routing
- > Ergonomic hand positions contoured into the handlebar
- Clamp: 31.8mm
- Width: 40, 42, 44 cm wide (center to center)
- Drop/Reach: 145mm/88mm
- Weight: 265 grams



#### Largo Drop Bar

- > Designed for clip-on aerobars. Wide center clamp, extended reach allows armrests to be placed closer to the rider.
- > 6061-T6 aluminum construction
- Clamp: 31.8mm
- Width: 40, 42, 44 cm wide (center to center)
- Drop/Reach: 135mm/110mm
- Weight: 285 grams



#### Legra SS™ Drop Bar

- > Double-butted 7050-T6 aluminum with and short reach and shallow drop and semi-anatomic bend
- > Clip-on aerobar compatible
- Clamp: 31.8mm
- Width: 40, 42, 44 cm wide (center to center)
- Drop/Reach: 125mm/70mm
- Color: Anodized matte black
- Weight: 280g (42cm)



#### Dino SSTM Drop Bar

- > Double-butted 6061-T6 aluminum with and short reach and shallow drop and semi-anatomic bend
- > Clip-on aerobar compatible
- Clamp: 31.8mm
- Width: 40, 42, 44 cm wide (center to center)
- Drop/Reach: 125mm/70mm
- Color: Anodized matte black
- Weight: 307 (42cm)



**CANTA™ STEM**

> 3-D forged 7075-T6 aluminum  
Length: 70, 80, 90, 100, 110 120mm  
Clamp: 31.8mm Steerer Diameter: 1 1/8" (1" with shim)  
Rise: 80° Color: Shot peen, anodized matte black  
Weight: 119-128 grams



**LEGRA™ STEM**

> 3-D forged 2014-T6 aluminum  
Length: 70, 80, 90, 100, 110 120mm  
Clamp: 31.8mm  
Steerer Diameter: 1 1/8" (1" with shim)  
Rise: 80°  
Color: Shot peen, anodized matte black  
Weight: 138-166 grams



**COBRA S / COBRA S WHITE**

> Carbon wrapped 3-D forged 7050-T6 Aluminum  
Length: 80, 90, 100, 110 120mm  
Clamp: 31.8mm  
Steerer Diameter: 1 1/8" (1" with shim)  
Rise: 84° or 96°  
Weight: 130 grams



**DINO™ STEM**

> 3-D forged 6061-T6 aluminum  
Length: 70, 80, 90, 100, 110, 120mm  
Clamp: 31.8mm  
Steerer Diameter: 1" or 1 1/8"  
Rise: 80°  
Color: Shot peen, anodized matte black  
Weight: 154-190 grams



**ARIS / ARIS OS**

> 3D forged 6061-T6 aluminum  
Length: 70-130mm  
Clamp: 26.0mm or 31.8mm  
Steerer Diameter: 1 1/8" (1" with shim)  
Rise: 65°, 83°, 97° & 115°  
Weight: 155-175 grams



**FFA FAST FORWARD ALUMINUM**

> Changes a 73° seat tube angle frame to 78°  
> 6061-T6 aluminum construction  
Diameter: 27.2mm  
Length: 265mm  
Offset: 38mm (forward)  
Weight: 310 grams



**FFC FAST FORWARD CARBON**

> Changes a 73° seat tube angle frame to 78°  
Diameter: 27.2mm and 31.6mm  
Length: 300mm  
Offset: 38mm (forward)  
Weight: 210 grams / 240 grams



**COBRA ZERO**

> Zero offset, multi-layer carbon with aluminum head  
Diameter: 27.2mm & 31.6mm  
Length: 330mm  
Offset: 0mm  
Weight: 210 grams



**KONA MEN'S SPECIFIC SADDLE**

> Triathlon specific design  
> The official saddle of Ironman Triathlon  
> Vented cover to facilitate moisture transfer

> Triathlon specific design

Rails: Titanium  
Weight: 295 grams



**KONA WOMEN'S SPECIFIC SADDLE**

> Triathlon specific design  
> The official saddle of Ironman Triathlon  
> Vented cover to facilitate moisture transfer

> Triathlon specific design

Rails: Titanium  
Weight: 298 grams



**TRI STRYKEDI**

> Cut-away with vents  
> Triathlon specific design  
> Extra padding for all day comfort

Colors: Black/White, Black/Black  
Rails: Titanium  
Weight: 285 grams



**TRI STRYKE CHROMOLY**

> Cut-away with vents  
> Triathlon specific design  
> Extra padding for all day comfort

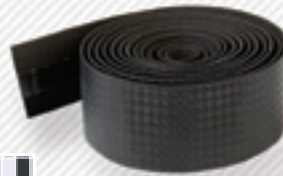
Colors: Black/White, Black/Black  
Rails: Chromoly  
Weight: 310 grams


**LOGO WRAP**

- > Synthetic cork with real cork added
- > Non-adhesive backed
- > Embossed Profile Design logo
- > Colors: Black, Yellow, Red, Blue
- Weight: 55 grams/pair


**SHOCK WRAP WITH GEL**

- > Gel cushion
- > Non-adhesive backed
- > Colors: Yellow, Red, Blue, White, Black solid
- Weight: 75 grams/pair


**KARBON WRAP**

- > Adhesive backing only
- > Includes Karbon Plugs
- > Colors: Simulated black & silver Karbon
- Weight: 50g/pair


**MICROFIBER WRAP**

- > Lightweight breathable material provides durable grip in wet or dry conditions
- > Colors: Black, White
- Weight: 50g/pair


**AEROG RIP™**

- > Kraton Rubber
- > Absorbs road shock
- Weight: 50g / pair



Solid Colors



Splash Colors



Split Colors



Floral Colors


**LOGO GRIP**

- > Injection molded construction
- > Soft compound rubber
- Length: Standard or Twist shift
- Color: Black, clear, yellow, blue, or red
- Weight: 92g


**DOUBLE DUROMETER GRIP**

- > Injection molded construction
- > Softer compound surrounds harder compound isolates vibration for more comfort
- Color: Black/gray, yellow/red, red/black, gray/black, or blue/black
- Weight: 85g


**ULTRA FR OS/ ULTRA FR MTB BAR**

- > Double-buttet 6061-T6 aluminum construction
- > Shot peened and anodized finish
- Clamp: 25.4mm or 31.8mm bar clamp diameter
- Rise: 40 or 60mm rises
- Width/sweep: 660mm wide, 10° sweep
- Color: Matte black
- Weight: 285g Ø25.4, 350g Ø31.8


**KARBON STUBBY**

- > Forged aluminum offset clamp design allows for more room on the handlebar
- > Multi-directional carbon fiber body
- Shorter Stubby™ length
- Color: Gloss carbon
- Weight: 124g


**SOS BAR ENDS**

- > 6061-T6 forged aluminum construction
- > Offset clamp design allows for more room on the handlebar
- > 28.6mm Super Over Sized design
- Lengths: Stubby™, Brief™ or Boxer™
- Color: Matte black
- Weight: 120-195g


**BRIEF AND BOXER BAR ENDS**

- > 6061-T6 forged aluminum construction
- > Offset clamp design allows for more room on the handlebar
- Color: Matte black or matte silver
- Weight: 150g/170g/pair

**AQUALITE**

- > Easy re-fill no splash cap
- > Compatible with narrow mounting aerobars or wider systems using our Aerodrink Bracket (sold separately)
- > 22oz. capacity
- > Weight: 95 grams

**INSULATED AERODRINK**

- > Easy re-fill no splash cap
- > Insulated to keep beverages cold
- > Compatible with narrow mounting aerobars or wider systems using our Aerodrink Bracket (sold separately)
- > 22oz. capacity
- > Weight: 210 grams

**AERODRINK**

- > Easy re-fill no splash cap
- > Compatible with narrow mounting aerobars or wider systems using our Aerodrink Bracket (sold separately)
- > 30oz. capacity
- > Weight: 171 grams

**AQUACELL**

- > Dual chamber aerobar mounted drink system
- > Main chamber holds 34 oz while secondary chamber holds 14 oz
- > Compatible with narrow mounting aerobars or wider systems with our Aerodrink Bracket (sold separately)
- > Weight: 310 grams

**H2AERO**

- > Evolutionary front mounted drinking system
- > Attaches via a patent pending bracket system
- > Splash-free easy refill system
- > Places bottle out of the "cockpit" mounting area
- > Capacity: 36oz
- > Weight: 395g (with AL bracket)

**WATER BOTTLE**

- > 24oz capacity

**INSULATED WATER BOTTLE**

- > 16 oz / .47L capacity
- > Maintains the temperature of cold liquids for 1 hour
- > Keeps liquids cool for up to 3 hours.

**RAZOR BOTTLE SYSTEM**

- > Gloss carbon Kage with aerodynamically shaped bottle
- > Capacity: 20oz
- > Combined weight: 134g

**RMC - REAR MOUNT CARBON**

- > Carbon fiber rear drink system with accessory mounting straps
- > Extra storage area has room for accessories
- > Compatible with standard 7mm saddle rails
- > Available w/ or w/o cages
- > Colors: Gloss carbon or White
- > Weight: 120 grams (w/o cages)

**RM1**

- > 6061-T6 aluminum
- > Includes 2 lightweight Profile Design Kages
- > Compatible with standard 7mm saddle rails
- > Includes CO2 mounting brackets
- > Colors: Matte black or White
- > Weight: 190 grams

**AQUARACK**

- > 6061-T6 aluminum clamp and extension
- > Includes 2 lightweight Profile Design Kages
- > Includes CO2 mounting brackets Fits 31.6mm to 27.2mm seatposts (shim included)
- > Colors: Matte black or White
- > Weight: 171 grams

**FUSE KAGE**

- > Nylon/glass fiber
- > Color: Red, White, Black
- > Weight: 37g

**HC MOUNT**

- > 6061 T6 Aluminium
- > Width Compatibility: up to 130mm
- > The system is offered with or without Profile Design KA1 cage
- > Weight: 24g (pair, crossbars only)

**STRADA KARBON KAGE**

- > Colors: Carbon Black w/silver logo
- > Weight: 27 grams

**KARBON KAGE**

- > Unique bottle grip prevents bottle launching
- > Applicable for all road or trail conditions
- > Colors: Carbon Black with Red, Yellow, Blue, Pink or Silver trim
- > Weight: 33 grams

**STRYKE KAGE**

- > Injected molded Nylon/Fiberglass
- > Colors: Red, Blue, Yellow, Black
- > Weight: 40 grams

**KAGE**

- > Nylon/fiberglass non-marking construction
- > Colors: Black or White
- > Weight: 52 grams

**AERODRINK BRACKET**

- > Attaches to bars with Velcro straps (included)
- > Secure Velcro bottle mounting
- > Adjusts to 140mm wide
- > Weight: 31 grams

**AERODRINK BASE BAR BRACKET**

- > Injected nylon/glass fiber
- > Mounts to base bar
- > Secure "click-in" attachment
- > Weight: 75 grams

**PROFILE DESIGN VALVE EXTENDER SET**

- > Available in 52mm or 80mm

**CO2 MOUNTING BRACKETS**

- > Attaches to any of our rear mounted drink systems or under bottle cage
- > Allows mounting of 2 standard threaded CO2 mounts per bracket
- > Weight: 23g

**CO2 INFLATOR**

- > Threaded, push-activated CO2 inflator
- > Compact and easy to use

**PROFILE DESIGN CO2 BULKBOX**

- > 30 Count Box
- > 16g Threaded CO2 cartridges

**TIRE LEVERS**

- > Compact 3 piece tire lever set designed to ease tire installation and prevent rim damage

*no picture available at this time*

**CERAMIC BEARINGS**

- > Precision super low friction sealed bearings deliver measurable performance benefits.
- > Compatible with all Altair 52 & Altair 80 wheelsets.



**VOLNA EXTENSIONS**

- > Pre-drilled for internal bar-end shifter cable routing
- > Multi-layered carbon fiber
- > Weight: 125 grams / pair

**CX3 EXTENSIONS**

- > Pre-drilled for bar-end shifter cable routing
- > Multi-layered carbon fiber
- > Weight: 120 grams / pair

**T2+ COBRA EXTENSIONS**

- > Pre-drilled for bar-end shifter cable routing
- > Multi-layered carbon fiber
- > 22.2mm outer diameter
- > Weight: 132 grams / pair

**T2+ EXTENSIONS**

- > Pre-drilled for bar-end shifter cable routing
- > 22.2mm outer diameter
- > 6061-T6 aluminum
- > Weight: 162 grams / pair

**T1+ EXTENSIONS**

- > Pre-drilled for bar-end shifter cable routing
- > 22.2mm outer diameter
- > 6061-T6 aluminum
- > Weight: 200 grams/pair

**T1+ VIPER EXTENSIONS**

- > Pre-drilled for bar-end shifter cable routing
- > Multi-layered carbon fiber
- > 22.2mm outer diameter
- > Weight: 182 grams/pair



**F-22C ARMREST KIT**

- > 17° of rotational adjustment
- > Pads and mounting hardware included
- > Carbon fiber construction
- > Weight: 79g

**F-22 ARMREST KIT**

- > 17° of rotational adjustment
- > Recessed, rust resistant bolts
- > Weight: 89g

**F-19 ARMREST KIT**

- > Injection molded arm rest construction
- > 12° of rotational adjustment
- > Weight: 153 grams

**MULTI-FIT SYSTEM KIT**

- > Allows early PD aerobars to work with 26.0mm and 31.8mm handlebars
- > Includes F-19 adjustable armrests
- > 6061-T6 forged aluminum
- > Weight: 642 grams

**F-19 & F-22 REPLACEMENT PADS**

- > Velcro strap style for easy replacement
- > Weight: 39-44g

**F-25 & F-25C ARMREST KIT**

- > 15° of rotational adjustment
- > Pads and mounting hardware included
- > Weight: F-25: 85g, F-25C: 75G



**UCM & UCM XL**

- > No tools required for installation
- > Two sizes (25mm & 60mm) are available to fit all applications.
- > Weight: 14-22 grams

**VENTURI PADS**

- > Replacement for Century Aerobar
- > Adhesive backing
- > Weight: 39 grams/pair

**VENTURI VELCRO PADS**

- > Replacement for Century Aerobar
- > Velcro backing
- > Weight: 132 grams/pair

**ZB BRACKET KITS**

- > Two kits to choose from: 26.0mm, 31.8mm base bars
- > 6061-T6 forged aluminum
- > Fixed or flip up styles
- > Weight: 65-70 grams

**CARBON HEAD SPACERS**

- > 2, 3, 5mm (packs of 10 each) and 10 or 20mm (packs of 5 each)
- > Available for 1" or 1-1/8" Steer Tubes
- > Weight: 1-10 grams

**BASEBAR BRACKET RISER KIT**

- > No tools required for installation
- > Two sizes (25mm & 60mm) are available to fit all applications.
- > Weight: 14-22 grams



**CARBON X 1.5 KIT**

- > Allows for the armrests to be installed directly onto the top of the wing of the Carbon X

**AEROBRIDGE**

- > Closes tips of any Profile Design split aluminum (except Jammer GT or CGT) or old style Carbon X and allows use of Swiftshift/Split Second
- > Weight: 50 grams

**J2 BRACKET KIT**

- > Allows for wider armrest mounting on older models of the Jammer GT, CGT, T2+, and T2+ Cobra

**J3 BRACKET KIT**

- > 6061-T6 Aluminum
- > Allows for wider armrest mounting

**GAP CAP**

- > Works with threadless steerer tube
- > Composite wedges
- > Fits 1" or 1-1/8" steer tubes, aluminum or Karbon top cap
- > Weight: 30-45 grams

**E-PACK**

- > Top-tube mounted pack
- > Padded sides maintain shape
- > Large - 150 x 50 x 90mm, 386 cm3
- > Small - 75 x 40 x 105mm, 220 cm3
- > Colors: Black, Red, Grey
- > Weight: Large - 30g, Small - 15g



**KARBON PLUGS**

- > Simulated black
- > Weight: 9 grams

**SWIFT SHIFT**

- > Mounts all standard down tube shift levers with a single bolt mounting to Aerobridge, Airstrike or Century
- > Shift levers not included
- > Weight: 68 grams

**THREADLESS CONVERTER**

- > Converts all quill style forks to use threadless stems
- > Weight: 50 grams

**AERODRINK PARTS KIT**

- > Includes: Both straws, mesh, rubber bands, and Velcro pieces

**WHEEL BAG**

- > Padded bag holds front and rear wheels
- > Includes storage compartment, shoulder strap, and zipper & Velcro closure

**CAMPAGNOLO FREE HUB BODY**

- > Adapts Altair or Armada wheelset for Campagnolo compatibility



#### MEN'S AND WOMEN'S 2012 WAHOO FULL AND SLEEVELESS WETSUIT

The Wahoo, unlike most brands in its category, is available in both Full and Sleeveless models AND offers a full size run for Women and Men. These wetsuits feature lightweight, comfortable XFLEX 360 stretch neoprene with hydrodynamic coating and water-repellent jersey lining, YKK zippers, and glued/blind-stitched seams. The Profile Design Wahoo is a great race suit for a rookie, but is also an excellent choice for a training/travel wetsuit to minimize wear and tear on expensive race equipment.

- > Anatomically cut shoulders, underarms, and back give excellent fit, flexibility, function.
- > 4mm torso enables perfect body positioning and flotation
- > 1.5 mm sleeves and shoulders allow full rotation and extension
- > "Short Cut" sleeves and legs are 1-2" shorter than most suits, allowing very quick transitions, and full view of wrist watch/HR monitor
- > Top quality YKK zipper
- > BettyFit Women's Specific Design
- > Fabric: XFLEX 360 Neoprene (100% Non-fibrous sponge rubber laminated to nylon jersey)
- > Sizes: Men XS-XXL, Women XS-XXL

WAHOO  
SLEEVELESS



#### MEN'S AND WOMEN'S 2012 MARLIN WETSUIT

Profile Design's Marlin wetsuit is a triple threat with its incredible combination of 100% Yamamoto SCS Nano neoprene, technical features, and perfect fit. Ribbed insets, innovative patterning and Women's BettyFit sizing make the Marlin an excellent piece of equipment for every athlete, from first timer to pro. Marlin's buoyancy, flexibility and durability provide fast swims and quick transitions, making it the top choice for training and racing.

- > Yamamoto SCS\* Nano, the most advanced non-friction coating available, reduces drag by 97% over conventional wetsuit neoprene.
- > 5.0 SCS\* Nano in torso and legs provides maximum buoyancy to maintain perfect swimming position
- > Ribbed SCS\* under arms allows maximum chest expansion and full arm/shoulder extension without compromising snug fit
- > 1.5 mm SCS\* shoulders and sleeves
- > Non-absorbent jersey lining and curved patterns stay comfortable in long swims
- > Low SCS lined collar with 2.0 mm SCS\* neck/shoulder gasket adds flex in shoulders and improves collar fit
- > Shaped ribbed SCS\* back knee panel eliminates restriction and discomfort during swim and transitions
- > Ribbed SCS\* calf "Speed Slice" and shorter diagonal cut legs slide over ankles and feet in a flash
- > Back collar flap hook and loop closure specially designed to stay snug when wet
- > YKK Reverse Zipper pulls UP to open and release for quick and simple transition
- > BettyFit Women's Specific Design – proportionally narrower shoulders and collar, thinner arms, curved waist, hips, and thighs
- > Construction – glued, blindstitched, and reinforced seams
- > Fabric – Yamamoto #39 Neoprene (100% Non-fibrous sponge rubber laminated to nylon or polyester jersey).
- > Sizes: Men XS-XXL, Women XS-XXL



#### MEN'S AND WOMEN'S 2012 MAKO LS SPEEDSUIT

Profile Design's Mako speedsuit has been given an "extreme Makover". Upgraded, lightweight, non-buoyant materials, impeccable fit and exceptional value place this year's Profile Design Mako LS at the top of the list of fast and comfortable speedsuits. Water-repellent jersey panels add compression and a form-fitting shape that, when combined with longer 20" inseams, improve streamlining and speed. The redesigned Mako LS is constructed for maximum speed, comfort, and durability. The Mako is available in a wide range of men's and women's BettyFit sizes.

- > Yamamoto BRS fabric, coated with SCS\* the most advanced hydrodynamic coating available, reducing drag in the water by 97% over polyurethane, uncoated fabrics, and wet skin.
- > This translates to 1 second faster/100 meters in a pool vs other technical swimwear.
- > The Mako LS speedsuit will further reduce triathlon swim and transition times by covering less- hydrodynamic tri apparel (with its mesh, pockets and pads,) and eliminating the need for a change of clothes.
- > Snug fit supports torso, hips, and legs.
- > 20" inseam streamlines legs while still easy to remove in transition
- > 14" YKK Zipper with nylon pull cord
- > BettyFit Women's Specific Design: proportionally smaller armholes, appropriately curved waist, hips, and thighs.
- > Fabric 1: 53% non fibrous sponge rubber, Fabric 2: Nylon 71%, Spandex 29%
- > Sizes: Men S,M,L,XL, XXL, Women XS,S,M,L, XL

NOTE: The Mako LS is a non-buoyant garment for non-wetsuit legal triathlon swim racing\*\*, and is meant to be worn over race clothing and removed after the swim.



**MAKO EXT SPEEDSUIT**

This Speedsuit features the fastest and most drag reducing 100% textile swim fabric available. Knee-length legs are quick in transition and comply with new speedsuit rules for Ironman™ and Ironman 70.3™ racing.

- > Yamamoto BRS TX2S: Most Advanced streamlining 100% textile fabric available. No neoprene content, non-buoyant.
- > BRS-TX2S Fabric is extremely lightweight, water resistant, non-absorbent, tightly knit for optimal compression and streamlining.
- > WTC\* Compliant Follows new rules for speeduits outlined by World Triathlon Corporation effective September 1, 2010.
- > Garment streamlines triathlon clothing (pockets, mesh, etc.) and is meant to be REMOVED after swim.
- > High Spandex fabric inserts allow tight but not constricting fit.
- > Snug fit supports torso, hips, and legs.
- > 9" inseam streamlines legs while still easy to remove in transition.
- > 14" YKK Zipper with nylon pull cord.
- > BettyFit Women's specific design: proportionally smaller armholes, appropriately curved waist, hips, and thighs.
- > Fabric 1: 80% Polyester, 20% Polyurethane (Weight 180 gms/M2)
- > Fabric 2: Nylon 71%, Spandex 29% (Weight 161 gms/M2)
- > FABRIC 1 is FINA approved, but MAKO TXT is NOT designed for pool or open water swim competitions unless specifically approved by individual race directors.
- > Sizes: Men S,M,L,XL, XXL, Women XS,S,M,L, XL

\* World Triathlon Corporation, parent company of Ironman, Ironman 70.3, Irongirl, and IronKids races.



**WOMENS**



For 2012, we have created BettyFit, a women's specific wetsuit pattern designed to accommodate both the obvious and subtle physical differences in female triathlete anatomy. We realize that our customers come in varying shapes, sizes, and athletic abilities, so on rare occasions, the best-fitting suit for a woman may come from the men's size chart. We offer excellent options for you to find a Profile Design Wetsuit that will fit your body and budget

**BETTYFIT FEATURES:**

- > Smaller neckline
- > Proportionally smaller shoulders and arms
- > Smaller armholes (sleeveless suits)
- > Accommodation for bust
- > Higher, narrower waist
- > Wider hips and thighs
- > Shorter zipper in smaller sizes
- > Smaller logos and graphics

# Aerobar Range of Adjustment

## VOLNA

Extension Adjustability:  
Width – Not adjustable / Length – 80mm / Rotational – 360° / Height – Not adjustable

Armrest/Pad Adjustability:  
Width – 38mm (per side) / Length – 20mm / Rotational – 17° (+/- 8.5°) / Height – 13mm / Uncompressed pad height from center of base bar - 32mm / Armrest setback from center of base bar (from rear edge of armrest) - 35mm or 55m

Bridge Adjustability:  
Not adjustable

## CX3

Extension Adjustability:  
Width – Not adjustable / Length – 70mm / Rotational – 360° / Height – Not adjustable

Armrest/Pad Adjustability:  
Width – 38mm (per side) / Length – 20mm / Rotational – 17° (+/- 8.5°) / Height – 13mm / Uncompressed pad height from center of base bar - 37mm / Armrest setback from center of base bar (from rear edge of armrest) – 35mm or 55mm

Bridge Adjustability:  
Not adjustable

## T MAG

Extension Adjustability:  
Width – Determined by the center clamp area width / Length – 115mm / Rotational – 360° Height – Not adjustable

Armrest/Pad Adjustability:  
Width – 19mm (per side) / Length – 20mm / Rotational – 17° (+/- 8.5°) / Height – 13mm / Uncompressed pad height from center of base bar - 37mm or 50mm (with riser) / Armrest setback from center of base bar (from rear edge of armrest) - 51mm or 71mm

Bridge Adjustability:  
Not adjustable

## ZBS TT / DL / S- / SKI- / STRYKE-BENDS

Extension Adjustability:  
Width – Determined by the center clamp area width / Length – Not Adjustable. / Rotational – Not adjustable / Height – Not adjustable / Misc - Base bar center to tip: Sml 225mm, Med 245mm, Lrg 265mm

Armrest/Pad Adjustability:  
Width – 19mm (per side) / Length – 42mm / Rotational – 17° (+/- 8.5°) / Height – 13mm / Uncompressed pad height from center of base bar - 37mm or 50mm (with riser) / Armrest setback from center of base bar (from rear edge of armrest) - 46mm, 67mm, or 88mm

Bridge Adjustability:  
Not adjustable

## CARBON STRYKE

Extension Adjustability:  
Width – Determined by the center clamp area width / Length – 120mm / Rotational – 360° Height – Not adjustable

Armrest/Pad Adjustability:  
Width – 19mm (per side) / Length – 42mm / Rotational – 17° (+/- 8.5°) / Height – 13mm / Uncompressed pad height from center of base bar - 37mm or 50mm (with riser) / Armrest setback from center of base bar (from rear edge of armrest) - 46mm, 67mm, or 88mm

Bridge Adjustability:  
Not adjustable

## T2+ COBRA / T2+ / T1+ VIPER / T1+ / T3+

Extension Adjustability:  
Width – Determined by the center clamp area width / Length – 110mm / Rotational – 360° / Height – Not adjustable

Armrest/Pad Adjustability:  
Width – Not adjustable / Length – 42mm / Rotational – 17° (+/- 8.5°) / Height – 13mm / Uncompressed pad height from center of base bar - 63mm or 76mm (with riser) / Armrest setback from center of base bar (from rear edge of armrest) 70mm, 91mm, or 112mm

Bridge Adjustability:  
Rotational – 360°

## T2+ DL

Extension Adjustability:  
Width – Determined by the center clamp area width or none if Aerobridge is used / Length – 20mm / Rotational – 360° or none if Aerobridge is used / Height – Not adjustable

Armrest/Pad Adjustability:  
/ Width – 19mm (per side) / Length – 42mm / Rotational – 17° (+/- 8.5°) / Height – 13mm / Uncompressed pad height from center of base bar - 63mm or 76mm (with riser) / Armrest setback from center of base bar (from rear edge of armrest) 70mm, 91mm, or 112mm

Bridge Adjustability:  
Rotational – 360°

## AIRSTRYKE S

Extension Adjustability:  
Width – Not adjustable / Length – 120mm / Height – Not adjustable

Armrest/Pad Adjustability:  
Width – 19mm (per side) / Length – 42mm / Rotational – 17° (+/- 8.5°) / Height – 13mm / Uncompressed pad height from center of base bar - 50mm or 63mm (with riser) / Armrest setback from center of base bar (from rear edge of armrest) 46mm, 67mm, or 88mm

Bridge Adjustability:  
Flip-up style ZB (compatible with non flip-up ZB brackets)

## AIRSTRYKE

Extension Adjustability:  
Width – Not adjustable / Length – 120mm / Height – Not adjustable

Armrest/Pad Adjustability:  
Width – 19mm (per side) / Length – 42mm / Rotational – 17° (+/- 8.5°) / Height – 13mm / Uncompressed pad height from center of base bar - 50mm or 63mm (with riser) / Armrest setback from center of base bar (from rear edge of armrest) 46mm, 67mm, or 88mm

Bridge Adjustability:  
Rotational – Flip-up style ZB (compatible with non flip-up ZB brackets)

## CENTURY

Extension Adjustability:  
Not adjustable

Armrest/Pad Adjustability:  
Width – 38mm (per side) Length – Not adjustable / Rotational – 360° / Height – Not adjustable / Uncompressed pad height from center of base bar - 70mm / Armrest setback from center of base bar (from rear edge of armrest) 52mm

Bridge Adjustability:  
Rotational – 360° Non Flip-up style

## LEGACY

Extension Adjustability:  
Not adjustable

Armrest/Pad Adjustability:  
Width – 38mm (per side) Length – Not adjustable / Rotational – 360° / Height – Not adjustable / Uncompressed pad height from center of base bar - 50mm / Armrest setback from center of base bar (from rear edge of armrest) 52mm

Bridge Adjustability:  
Rotational – 360° Non Flip-up style



# Warranty Information

## PROFILE DESIGN AND WARRANTY

Profile Design warrant all products for two years from original purchase. For further details on the Profile Design warranty and Crash Replacement policy please visit: [www.profile-design.com/warranty](http://www.profile-design.com/warranty)

# Customer Service

Profile Design customer service is here to help you. Office hours are Monday through Friday, 8:30 a.m. to 5 p.m. PST. Our staff of cyclists know every detail of the product line, what products work best in real world conditions and size related specifics. We are here to answer your questions regarding fit and construction and will gladly assist with your order.

Please contact your Profile Design representative at 888-800-5999 for current pricing, shipping or more information regarding Profile Design products and services. 06/08

Profile Design and the Profile Design Logo are registered trademarks. All other logos and trademarks are the property of their respective owners.

# Size Chart

	XS	S	M	L	XL	XXL	XXXL
<b>Wetsuit Size Guide:</b>							
<b>Men's</b>							
<b>Height</b>	5'2" - 5'5"	5'5" - 5'7"	5'7" - 5'9"	5'9" - 6'1"	6'1" - 6'2"	6'2" - 6'3"	6'3" +
<b>Weight</b>	110 - 130 lbs	130 - 149 lbs	149 - 170 lbs	170 - 180 lbs	180 - 195 lbs	195 - 215 lbs	215 - 230 lbs
<b>Women's</b>							
<b>Height</b>	4'9" - 5'	5'0" - 5'4"	5'2" - 5'5"	5'4" - 5'7"	5'5" - 5'9"		
<b>Weight</b>	88 - 100 lbs	99 - 121 lbs	110 - 132 lbs	121 - 143 lbs	132 - 154 lbs		



**CARBON AEROBARS**



Volna



CX3



T1+ Viper



T2+ Cobra



Carbon Styrke

**MAGNESIUM AEROBAR**



T-mag

**STEMS**



Canta



Cobra S



Legra



Dino



Aris/Aris OS

**ALUMINUM AEROBARS**



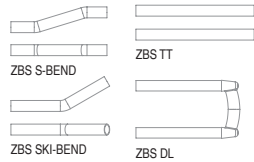
T3+



T1+



ZBS



T2+



T2+ DL



Airstryke S



Airstryke



Century



Legacy



Jammer GT

**HANDLEBARS**



Ultra FR OS/ UltraMTB bar

**BASE BARS**



Svet



Prosvet



Cobra Wing



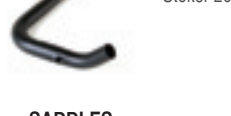
Ozero



T2 Wing



Airwing/  
Airwing OS



Stoker 26

**SADDLES**



Kona (men's)



Kona (women's)



Tri Stryke Ti



Tri Stryke Cromoly

**DROP BARS**



Canta SS



Cobra



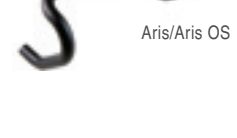
Largo



Legra SS



Dino SS



Aris/Aris OS

**SEATPOSTS**



FFC



Cobra



FFA

**BRAKE LEVERS**



ABS Carbon



ABS Semi Carbon



ABS AL™

**WHEELS**



Altair 52 Full Carbon Tubular



Altair 52 Full Carbon Clincher



Altair 52 Semi Carbon Clincher



Altair 80 Full Carbon Tubular



Altair 80 Full Carbon Clincher



Altair 80 Semi Carbon Clincher



Altair Disk



Armada 24



Armada 30



Armada 38



Armada 42

**HYDRATION**



Sync 2 Bottle Hydration Belt System



Sync 2 Bottle/Bracket Kit



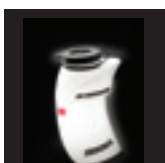
Sync 2 Bottle Kit



AquaLite



Insulated Aerodrink



Aerodrink



AquaCell



H2Aero



Razor Bottle



RM1



CFRM



Aquarack



Profile Design, LLC.  
2677 El Presidio Street  
Long Beach, CA 90810  
Tel: 310-884-7756  
[www.profile-design.com](http://www.profile-design.com)  
©Profile Design, LLC